

The WATERWAY AT LAKE OKEECHOBEE

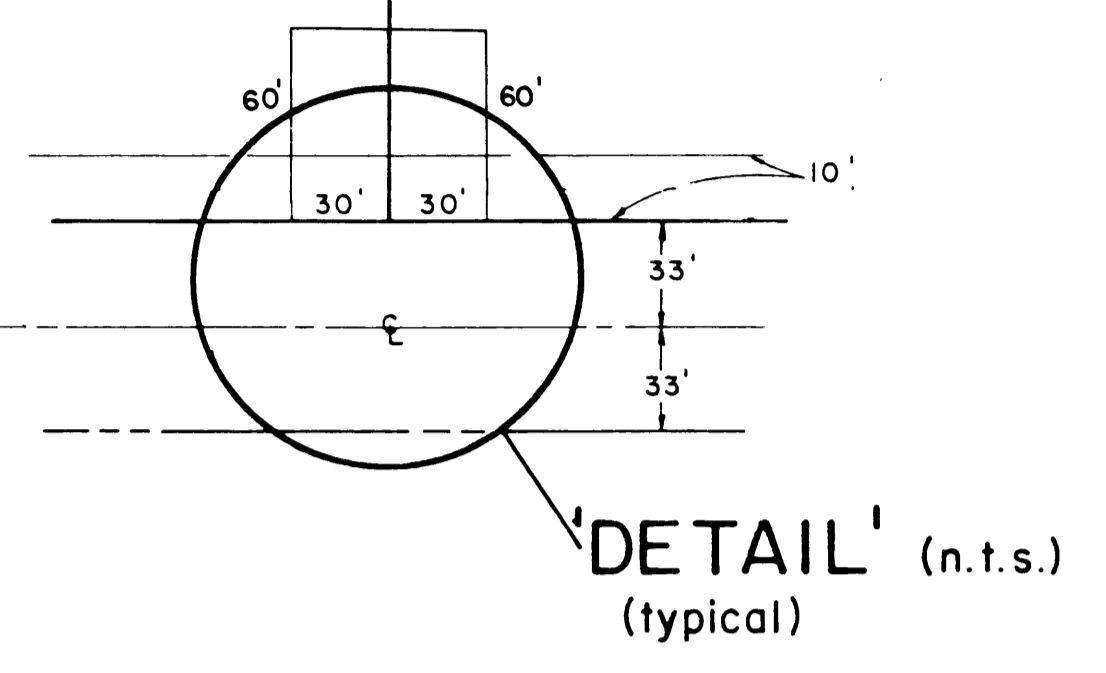
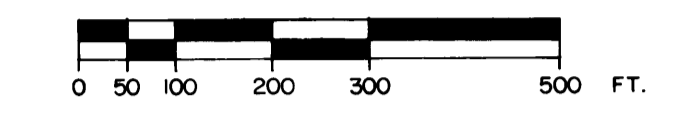
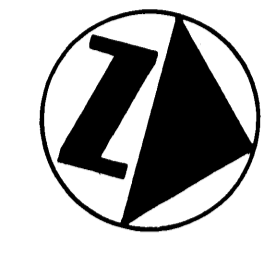
JULY, 1981

I, LOUISE V. ISAACS, CLERK OF THE CIRCUIT COURT OF MARTIN COUNTY, FLORIDA, HEREBY CERTIFY THAT THIS PLAT WAS FILED FOR RECORD IN PLAT BOOK 8 PAGE 83 MARTIN COUNTY, FLORIDA, PUBLIC RECORDS, THIS DAY OF 1981.

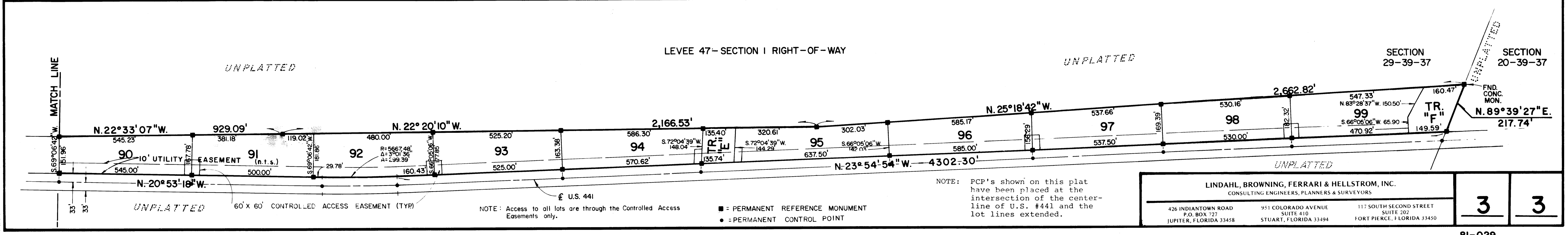
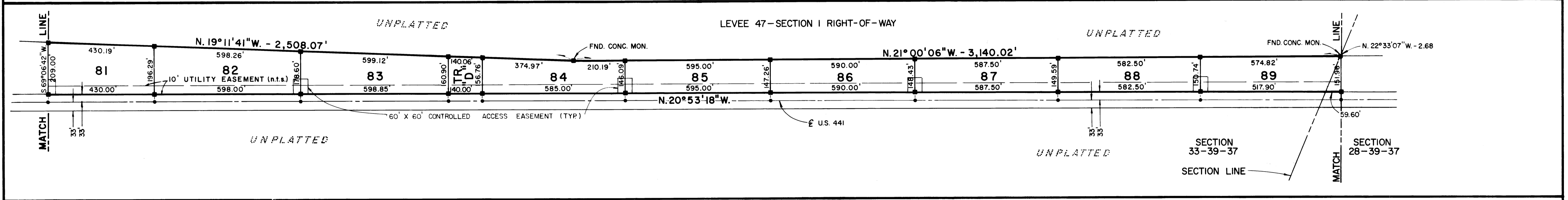
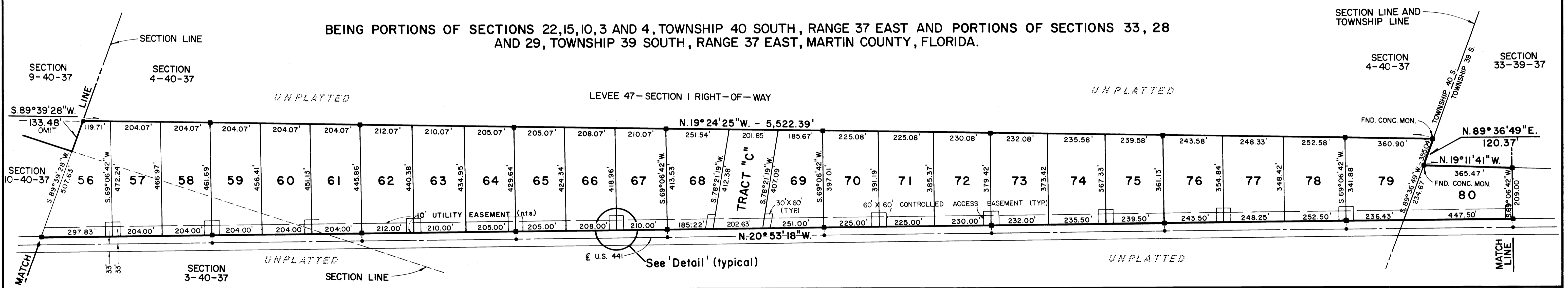
LOUISE V. ISAACS, CLERK CIRCUIT COURT MARTIN COUNTY, FLORIDA

BY: _____

FILE NO. _____



BEING PORTIONS OF SECTIONS 22, 15, 10, 3 AND 4, TOWNSHIP 40 SOUTH, RANGE 37 EAST AND PORTIONS OF SECTIONS 33, 28 AND 29, TOWNSHIP 39 SOUTH, RANGE 37 EAST, MARTIN COUNTY, FLORIDA.



NOTE: Access to all lots are through the Controlled Access Easements only. ■ = PERMANENT REFERENCE MONUMENT ● = PERMANENT CONTROL POINT

NOTE: PCP's shown on this plat have been placed at the intersection of the centerline of U.S. #441 and the lot lines extended.

LINDAHL, BROWNING, FERRARI & HELLSTROM, INC. CONSULTING ENGINEERS, PLANNERS & SURVEYORS
426 INDIANTOWN ROAD P.O. BOX 727 JUPITER, FLORIDA 33458
951 COLORADO AVENUE SUITE 410 STUART, FLORIDA 33494
117 SOUTH SECOND STREET SUITE 202 FORT PIERCE, FLORIDA 33450

3	3
---	---